



For detailed directions, maps, attractions, hiking locations, white-water rafting and list of upcoming events, visit our website at www.gatewaytothesmokies.org

Close By

Blue Ridge Parkway

No billboards, no rush. That's the 469 miles of the Blue Ridge Parkway. America's Favorite Drive snakes through valleys, over mountaintops and into dark tunnels. The Great Smoky Mountains National Park serves as the southern terminus of the Parkway, with Shenandoah National Park at the northern end.

Great Smoky Mountains N.P.

The Great Smoky Mountains National Park is the most visited park in the country, and with good reason – miles and miles of backcountry trails, pristine mountain streams, waterfalls and soaring mountain peaks.

Ghost Town in the Sky

Nestled at the foot of the Great Smoky Mountains in Maggie Valley, Ghost Town offers rides fit for the youngest buckaroo to the bravest outlaw. Ghost Town also features staged gunfights, live music and shows, crafts, food and lots more fun.

Cataloochee Ski Area

For generations of snow-loving families, Cataloochee is a winter tradition, and with good reason. At Cataloochee, everyone in the family, skiers and snowboarders, from novice to veteran, can carve a place of their own.

Southern Hospitality's Home in The Great Smoky Mountains



Maggie Valley & Waynesville
North Carolina



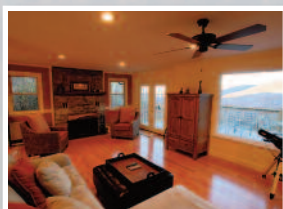
HAYWOOD CO.
**HOTEL
MOTEL**
ASSOCIATION

GatewayToTheSmokies.org

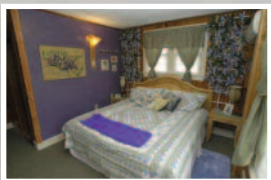


Be Our Guest...

When traveling to the Great Smoky Mountains, no one wants to be disappointed, especially with time as precious as a vacation. We are the members of the Haywood County Hotel & Motel Association and what we represent, is nothing but the best Maggie Valley and Waynesville areas have to offer. Quality standards, gracious accommodations and service second to none is what we are all about. Whether you are looking for the perfect mountainside retreat or the convenience of a room in town, look no further. We intend to not only live up to your highest expectations but exceed them every step of the way.



Over a century ago Haywood County became known as the “Gateway to The Smokies”. Folks arrived all summer long to escape the heat of the south to enjoy a vacation the cool temperatures that our high elevations had to offer. Maggie Valley is one of the highest towns east of the Mississippi at over 3,200 feet, nearly 1,500 feet higher than Gatlinburg, Tennessee, making summertime temperatures in the area 10-15 degrees cooler with average daytime highs being in the 70s to low 80s.





HOTEL/MOTELS

Maggie Valley Inn & Conference Center - 99 Rooms

828-926-0201 • 866-926-0201 • www.maggievalleyhotel.com

Smoky Mountain Lodge - 26 Rooms

828-926-1570 • 866-926-1570 • www.thesmokymountainlodge.com

Jonathan Creek Inn & Villas - 43 Rooms/6 Rentals

828-926-1232 • 800-577-7812 • www.jonathancreekinn.com

Maggie Valley Creekside Lodge - 35 Rooms

828-926-1301 • 800-621-1260 • www.creeksidelodge.com

Meadowlark Motel - 35Rooms/5 Cabins

828-926-1717 • 888-326-1717 • www.meadowlarkmotel.com

Smoky Falls Lodge - 33 Rooms

828-926-7440 • 877-926-7440 • www.smokyfallslodge.com

Laurel Park Inn - 18 Rooms

828-926-1700 • 800-451-4424 • www.laurelparkinn.com

Stony Creek Motel - 21 Rooms

828-926-1996 • 800-926-1196 • www.stonycreekmotel.org



VACATION/CABIN & VILLA RENTALS

Smoky Falls Vacation Rentals - 42 Rentals

828-926-6565 • 866-926-1482 • www.smokyfalls.com

Peppertree Resort - Condo Rentals

828-926-3761 • www.peppertreemv.com

Creek Wood Village Resort - 10 Rentals

828-926-3321 • 877-926-3341 • www.creekwoodvillageresort.com

Twinbrook Resort - 18 Rentals

828-926-1388 • 800-305-8946 • www.twinbrookresort.com

Cataloochee Ranch - 12 Rooms/12 Rentals

828-926-1401 • 800-868-1401 • www.cataloocheeranch.com

Creek 'n Woods - 4 Rentals

828-926-5259 • 1-800-484-8871 • www.creeknwoods.com

Country Cabins - 5 Rentals

888-222-4611 • www.countrycabinsmv.com

Deer Country Vacation Cabins - 5 Cabins

828-400-7597 • www.deercountry.com

Carolina Vacations - 135 Rentals

800-968-5817 • 828-926-0871

Maggie Mountain Vacations/Prudential Reality - 18 Rentals

828-550-1272 • 866-926-4030

Old Glory/Bear's Den Cabins - 2 Rentals

828-926-6565 • 866-926-1482 • www.smokyfalls.com

Boyd Mountain Log Cabins - 6 Rentals

828-926-1575 • www.boydmountain.com

Ferguson House/Beth Brown Photo - 1Rental

828-550-1272 • www.ferguson-house.com



NON-LODGING

Maggie Valley Area Visitors Bureau - Visitors Information

828-926-1686 • 800-624-4431 • www.maggievalley.org

Blossman Gas - Utility - 828-926-1537 • www.blossmangas.com

Maggie Valley Restaurant - Restaurant

828-926-0425 • www.maggievalleyrestaurant.com

Joey's Pancake House - Restaurant

828-926-0212 • www.joeyspancake.com

Smackers - Restaurant - 828-926-0999

iMountain.net/Red-i-Productions - Design/Websites

828-926-4320 • www.imountain.net

Carolina Nights - Entertainment

828-926-8822 • 888-622-SHOW • www.maggievalleyusa.com

Legends Sports Grill - Restaurant

828-926-9464 • www.legendsofmaggievalley.com

Tourist News - Media - 828-926-8039

The Mountaineer - Media - 828-452-0661 • www.themountaineer.com

High Country Furniture & Design - Furniture - 828-926-1722

RC Cola/Cheerwine - Vendor - 828-687-9771 • www.rcasheville.com

Ghost Town in the Sky - Attraction

828-926-1140 • www.ghosttowninthesky.com

Arf's - Restaurant • 828-926-1566

The Grizzly Grill - Restaurant • 828-926-7440 • www.thegrizzlygrill.com

Miss Carolines Wedding Chapel - Attraction

828-926-5227 • www.misscarolines.com